

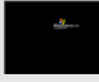
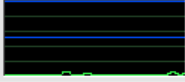

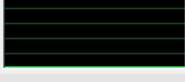

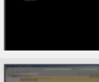
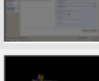

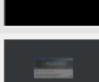
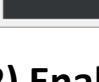
Test Driving TFS 2008

Category Team Foundation Server

- 1) Install TFS 2008
- 2) Enable remote accessibility via HTTP or HTTPS
- 3) Setup two team projects , WSSTP using Agile and MOSSTP using CMMI
- 4) Structure source control folders in team foundation Server
- 5) Add your solution to your source tree (under the right team project and folder)
- 6) Enable Web Access with Forms Based Authentication by installing Web Access Power tool
- 7) Install Visual Studio Team System 2008 Team Foundation Server Power Tools.

1) Install TFS 2008

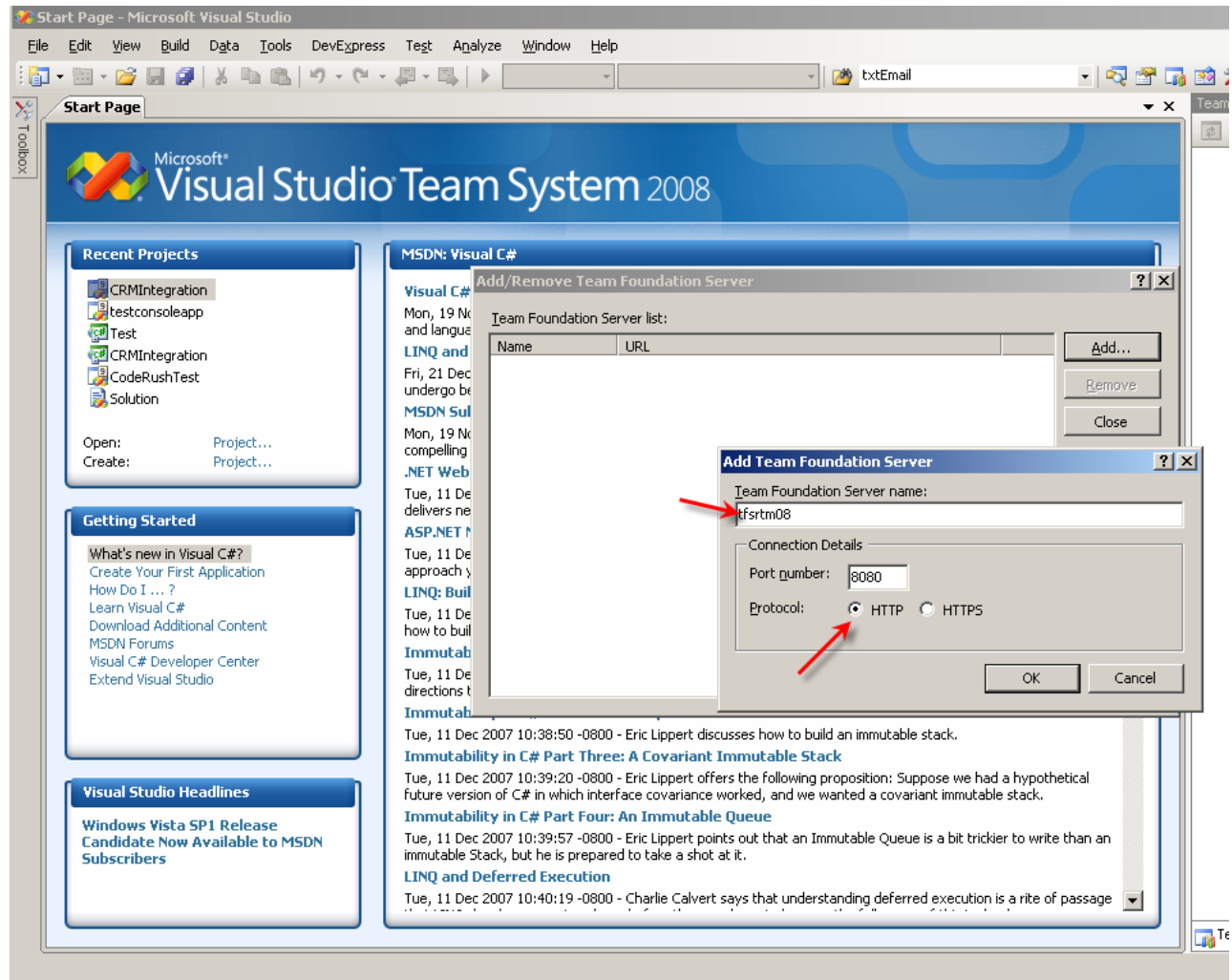
For installation please download and have a look at "How to: Install Team Foundation Server " in the TFS installation guide that can be download from [here](#).

toronto1 Status				
Remote View	Virtual Machine Name	Status ▲	Running Time	CPU Usage
	PT_VM_AD	▶ Running	2 days, 10 hours, 47 minutes	
	VSTS08RTM-R2	▶ Running	9 hours, 52 minutes	
	MOSSSandbox	▶ Saved	n/a	n/a
	PT_VM_CRM	▶ Saved	n/a	n/a
	PT_VM_MOSS	▶ Saved	n/a	n/a
	PT_VM_WP	▶ Saved	n/a	n/a
	PT_VM_WSS	▶ Saved	n/a	n/a
	WSSSandbox	▶ Saved	n/a	n/a

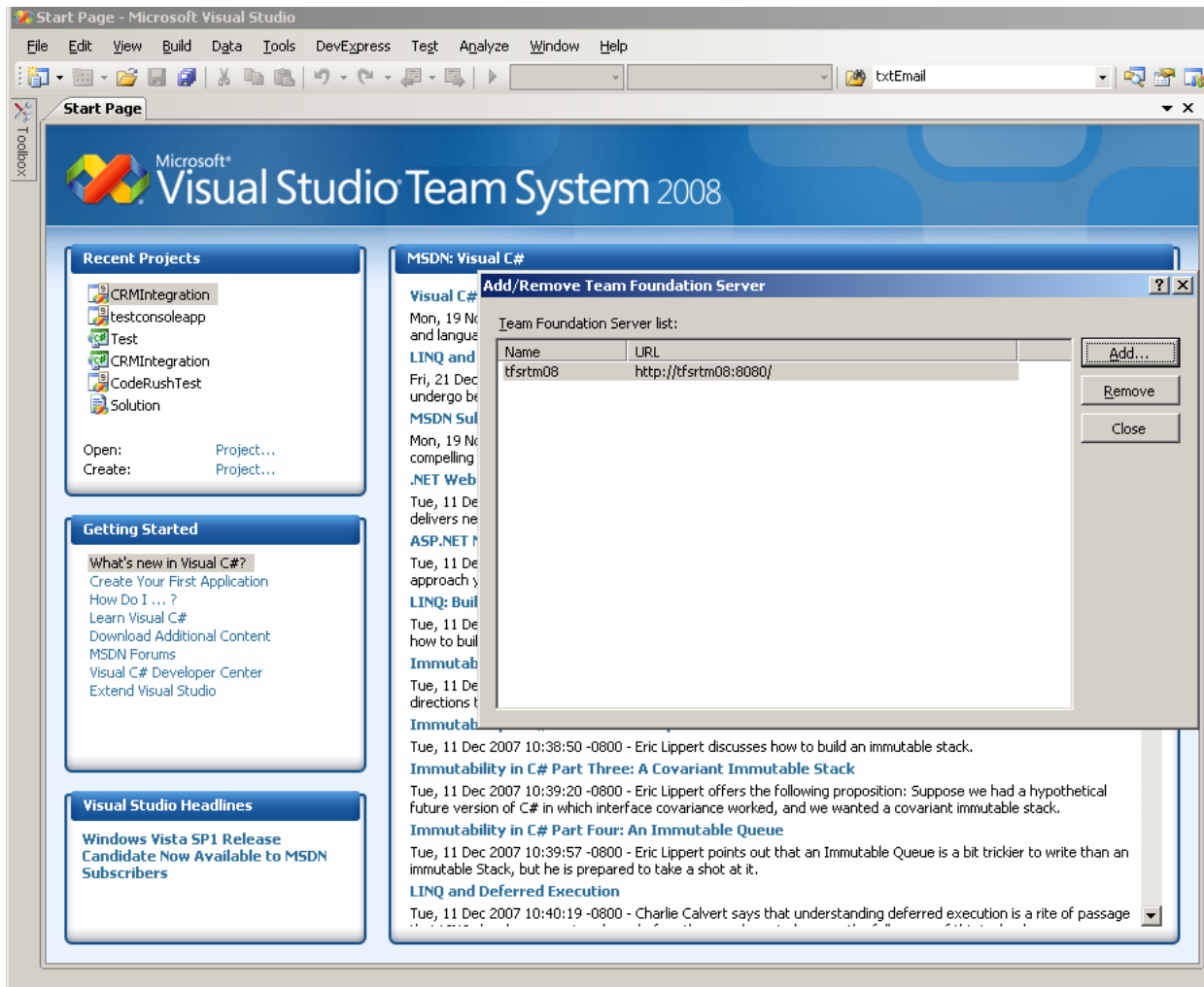
2) Enable remote accessibility via HTTP or HTTPS

For enabling remote accessibility via HTTP or HTTPS please refer to this [article](#) which was written for TFS 2005 . I am not sure if this [KB article](#) still applies to TFS 2008 ,but in previous version there was some support implications with accessing TFS remotely using non-VPN methods such as HTTPS. Secondly , for demoing purposes I m using HTTP here, but in real world you never want to expose your code without having a secure layer around it to the outside world , so HTTPS is the way to go. if you hit the Team

Foundation Server (**tfsrtm08**) from another machine , you should be able to connect to it using either HTTP or HTTPS protocols.



http://tfsrtm08 has been added to the list of existing Team Foundation Servers recognizable by our VS.NET 2008 UDE.



3) Setup two team projects(WSSTP using Agile and MOSSTP using CMMI)

Once you logged in to the TFS and in the team explorer , right click and choose Add New Team Project. Create two team projects using two available methodologies, Agile and CMMI.

- There is no specific reason for choosing Agile for WSS Team Project and CMMI for MOSS Team Project . I am just test driving them here ;)
- This process is wizard-driven and very easy to follow. That's why I just cut the crap to go over more fun stuff.

After going through the wizard , you should be able to browse to the SharePoint sites that TFS has created for you.

Home - WSSTP - Windows Internet Explorer

http://tfsrtm08/Sites/WSSTP/default.aspx

Manage Membership ProvidersTeam System : Accessing Te...Limitations on access to Visu..."VST508RTM-R2" Remote Co...Home - WSSTP

WSSTP

MSF for Agile Software Development

WSSTP

View All Site Content

Sites

Documents

- Development
- Project Management
- Requirements
- Security
- Test

Process Guidance

Reports

- Bug Rates
- Builds
- Quality Indicators
- Project Velocity
- Issues List
- Exit Criteria Status

Recycle Bin

Team Project for WSS Projects This team project was created based on the 'MSF for Agile Software Development - v4.2' process template.

Announcements

There are currently no active announcements. To add a new announcement, click "Add new announcement" below.

Add new announcement

Links

There are currently no favorite links to display. To add a new link, click "Add new link" below.

Add new link

Remaining Work

Remaining Work

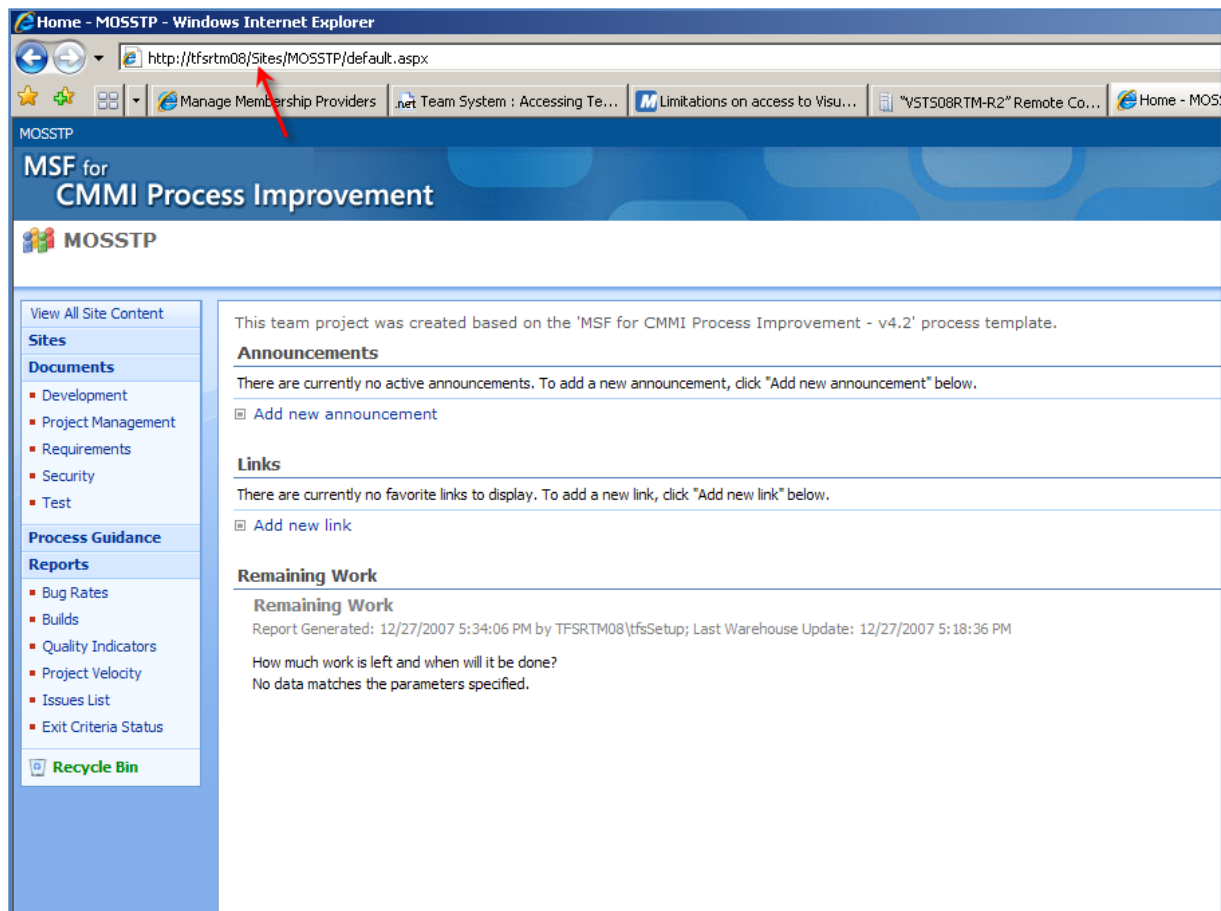
Report Generated: 12/27/2007 5:10:20 PM by TFSRTM08\tfsSetup; Last Warehouse Update: 12/27/2007 4:18:38 PM

How much work is left and when will it be done?

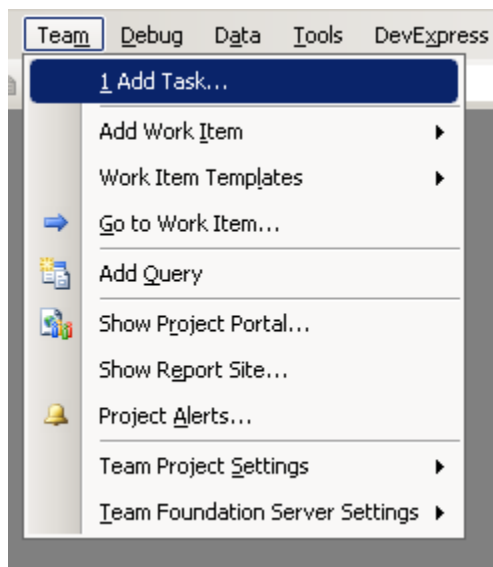
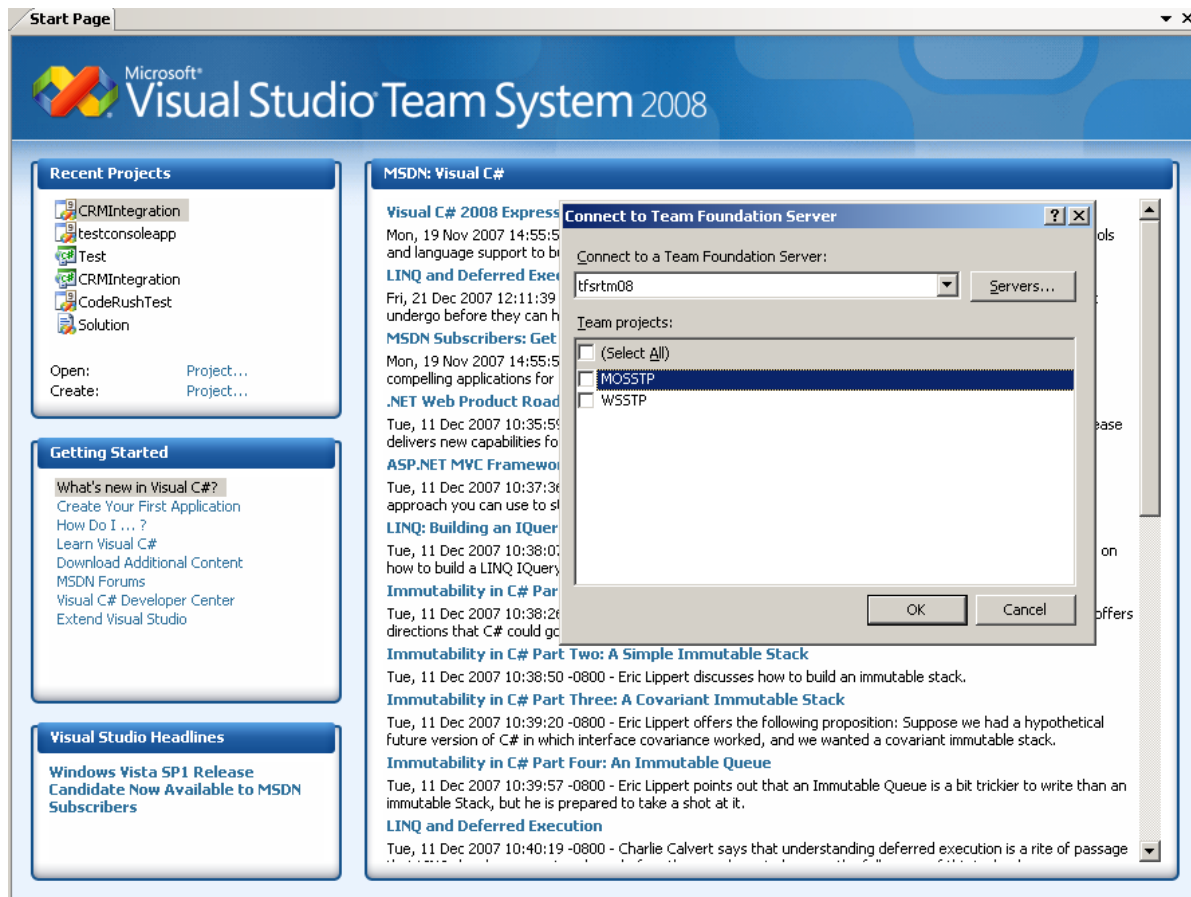
ActiveResolvedClosed

20

15



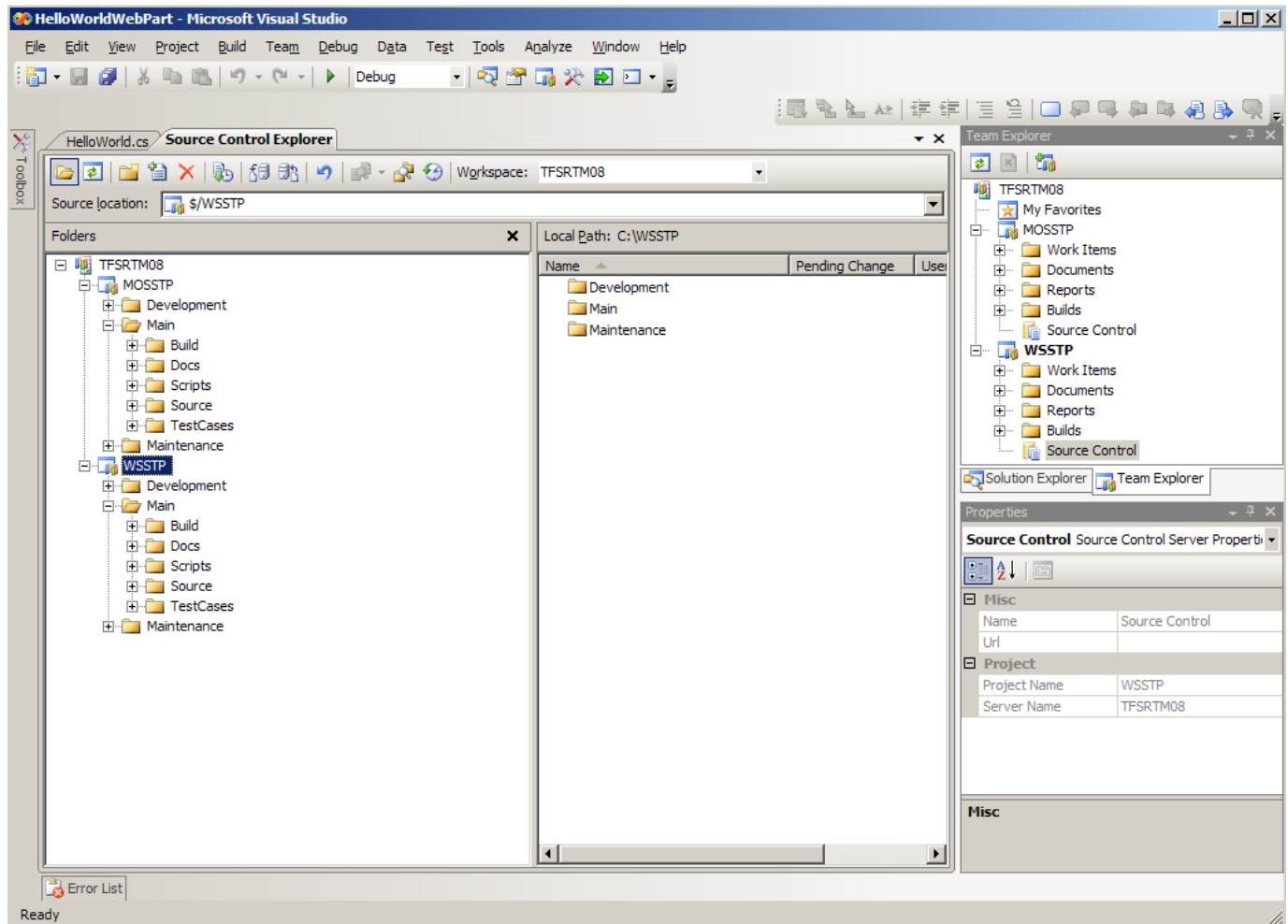
Now when you connect to our TFS Server , you see both Team projects to choose.



After you successfully set up your Team project there are so many things you can do from within your VS.NET IDE, of course if you have the required permissions. One of them is a new menu called "Team" that has been added to the existing ones. Go ahead and have a peek.

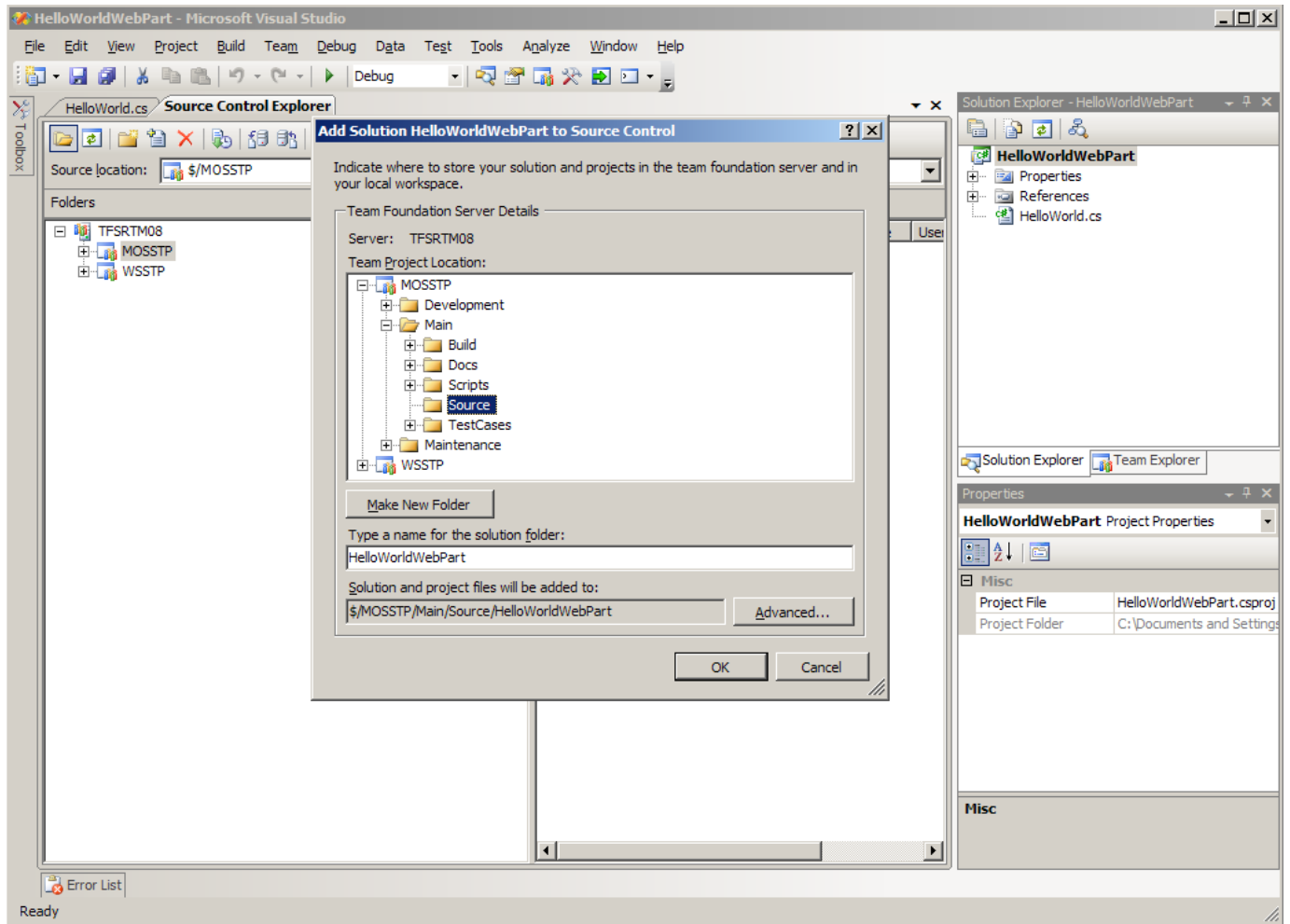
4) Structuring Source Control Folders in Team Foundation Server

In each team project set up the folder structure that is suitable for your development . For more information please read this [article](#).

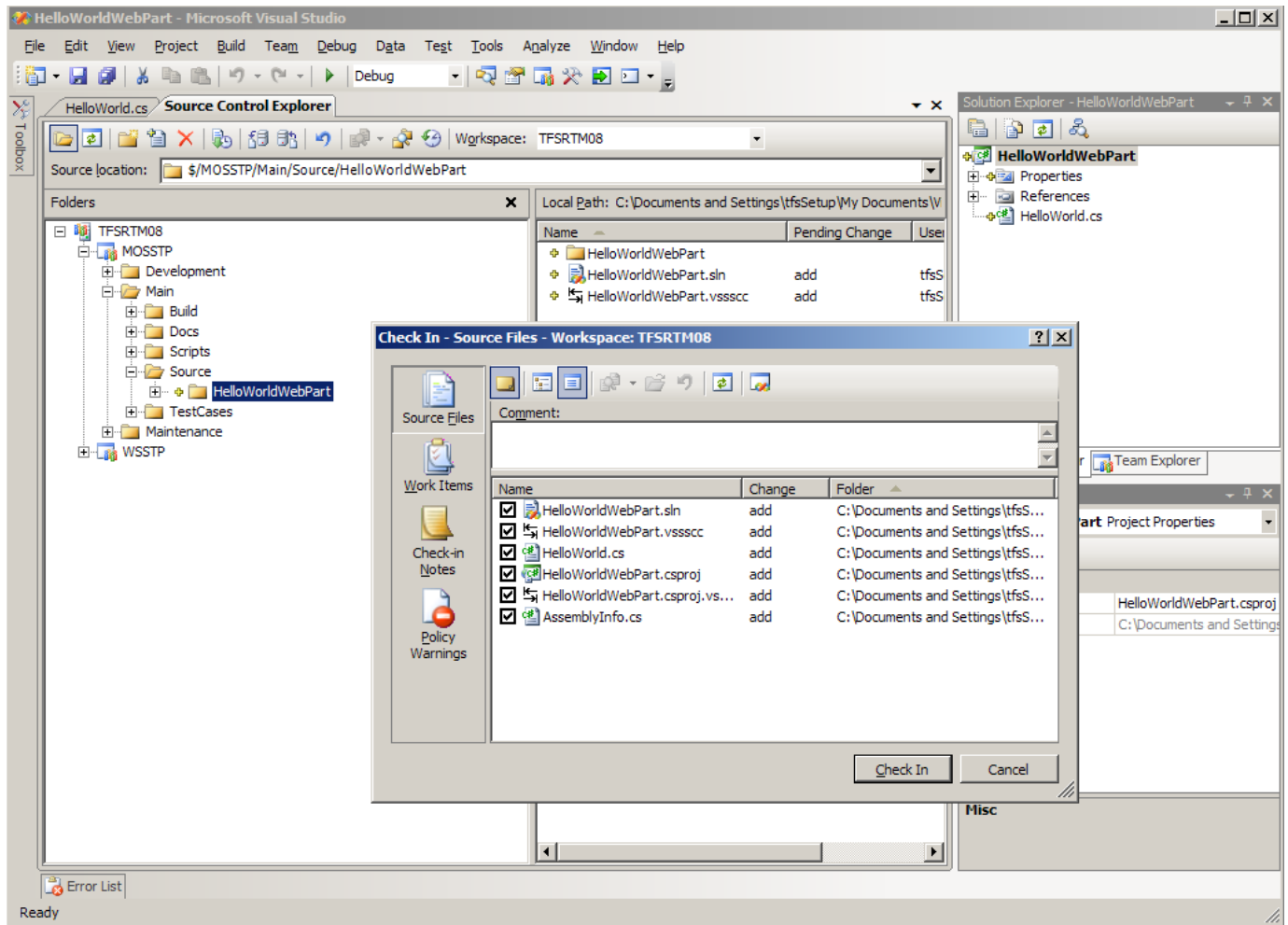


5) Add your solution to your source tree (under the right team project and folder)

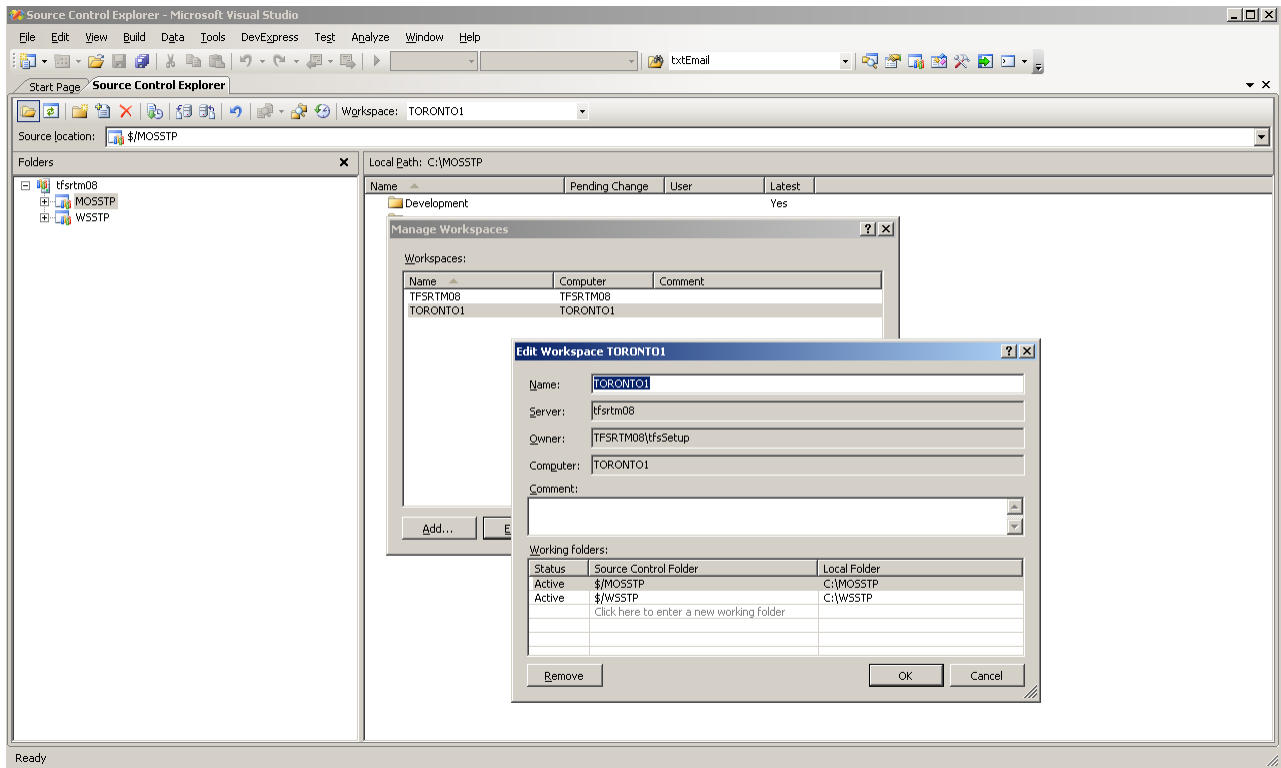
While you are in the source control explorer specify the folder that you want to check in your solution :



Check in your source code to the Source directory:

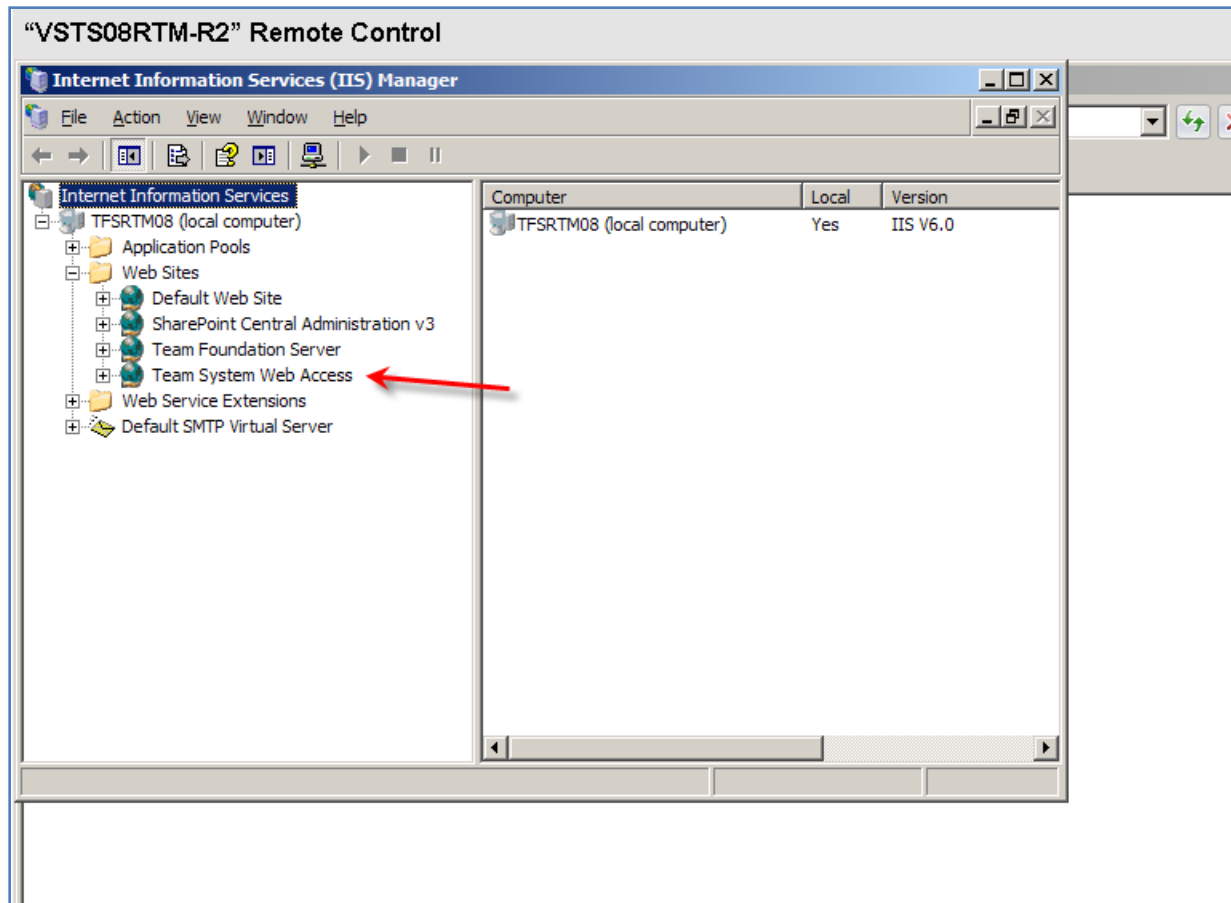


Testing from another workstation, verify that you get the right folder structure along with the source code that you have just checked in . I checked in the code from TFS machine (TFSRTM08) and now I am trying to get the latest version from another machine (TORONTO1).

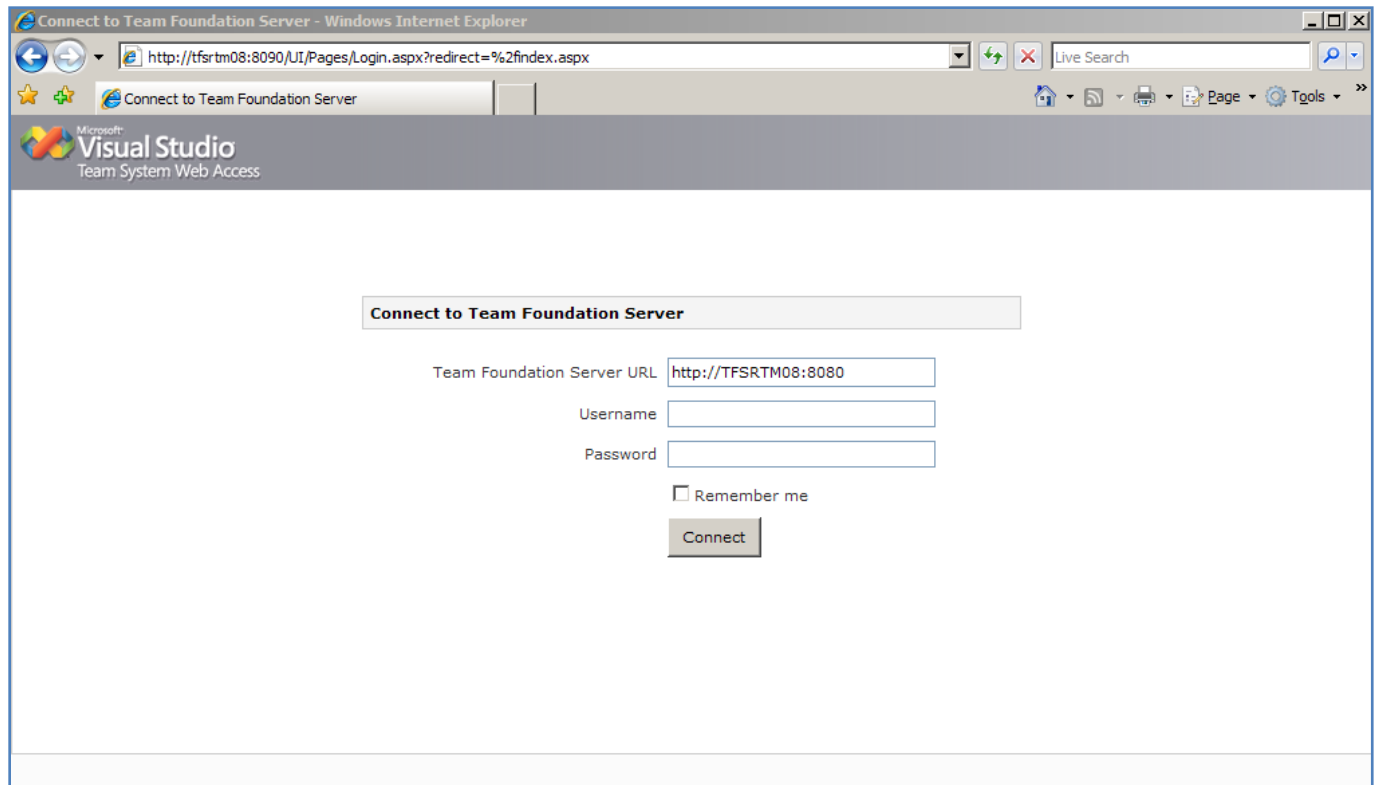


6) Enable web access with forms based authentication by installing web access power tool

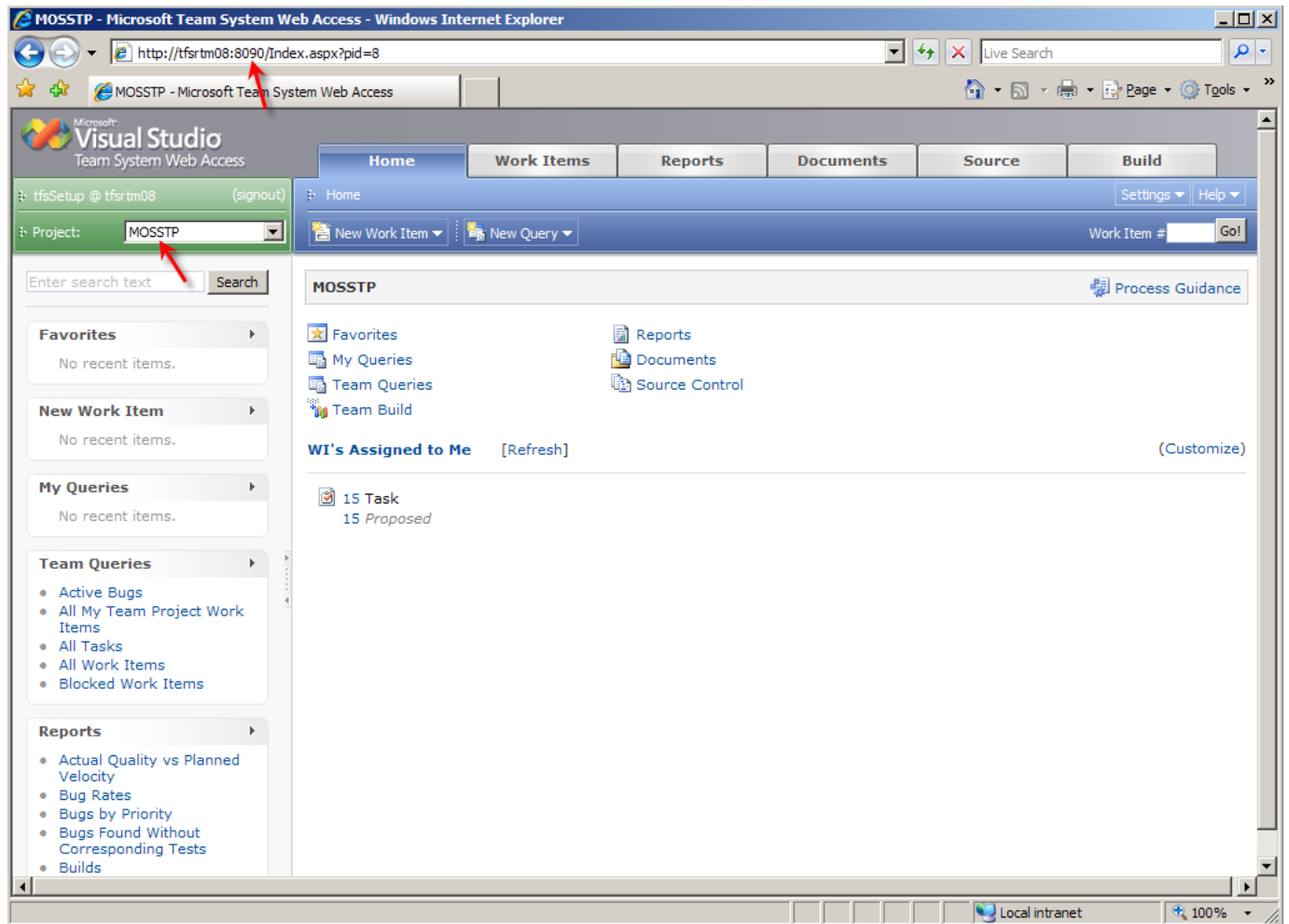
First you need to download Visual Studio Team System Web Access 2008 Power Tool from [here](#) and install it on your TFS machine. During installation it gives you the option to choose FBA as your main authentication method. After the installation is finished you will see that another web site has been added to IIS with the settings that you have specific in various wizards throughout the installation process.

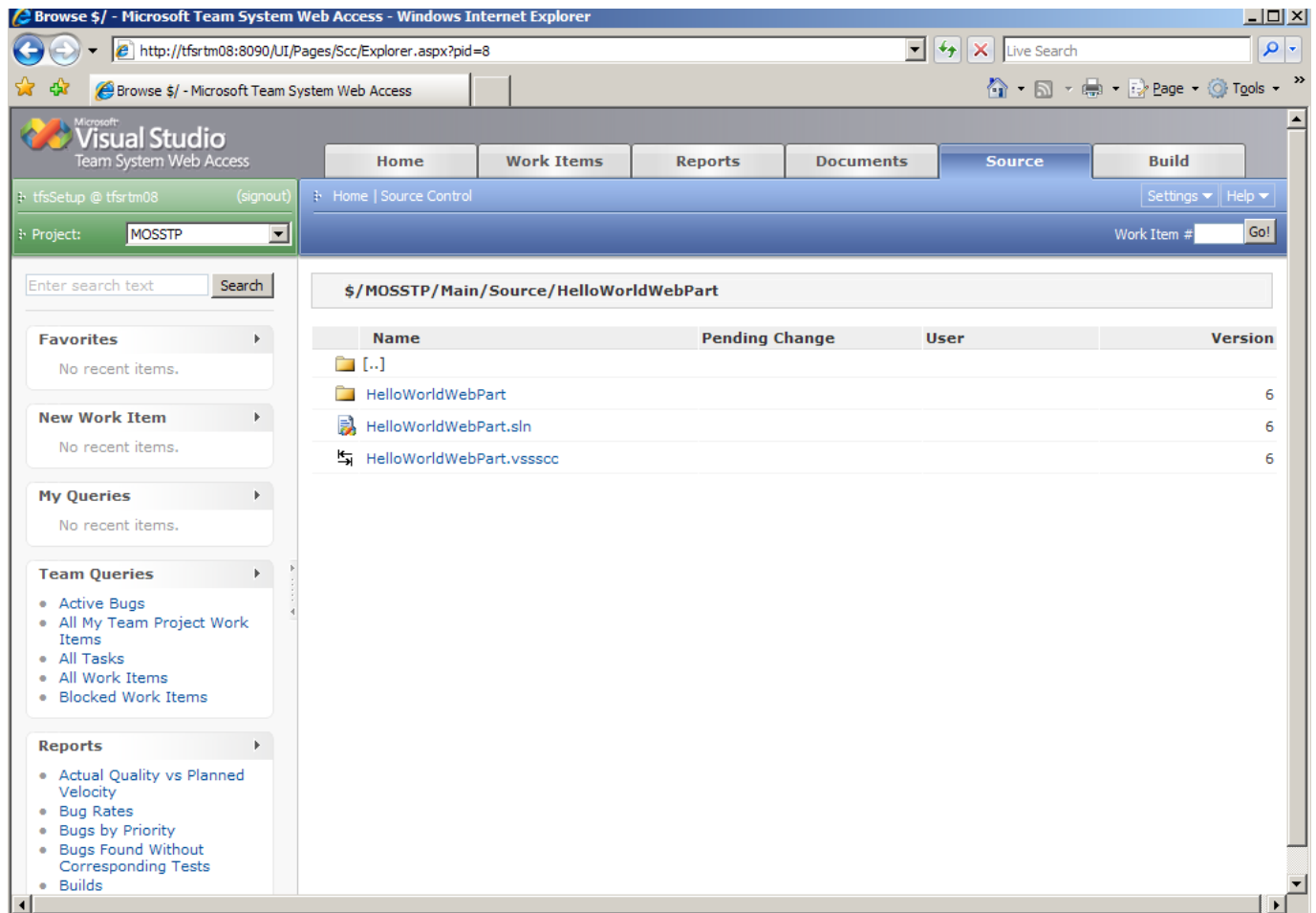


Now , just go ahead and hit the new site . Yes , as you can see you will be challenged to enter your credentials using a form based authentication mechanism. Go ahead and enter the right user name and password.



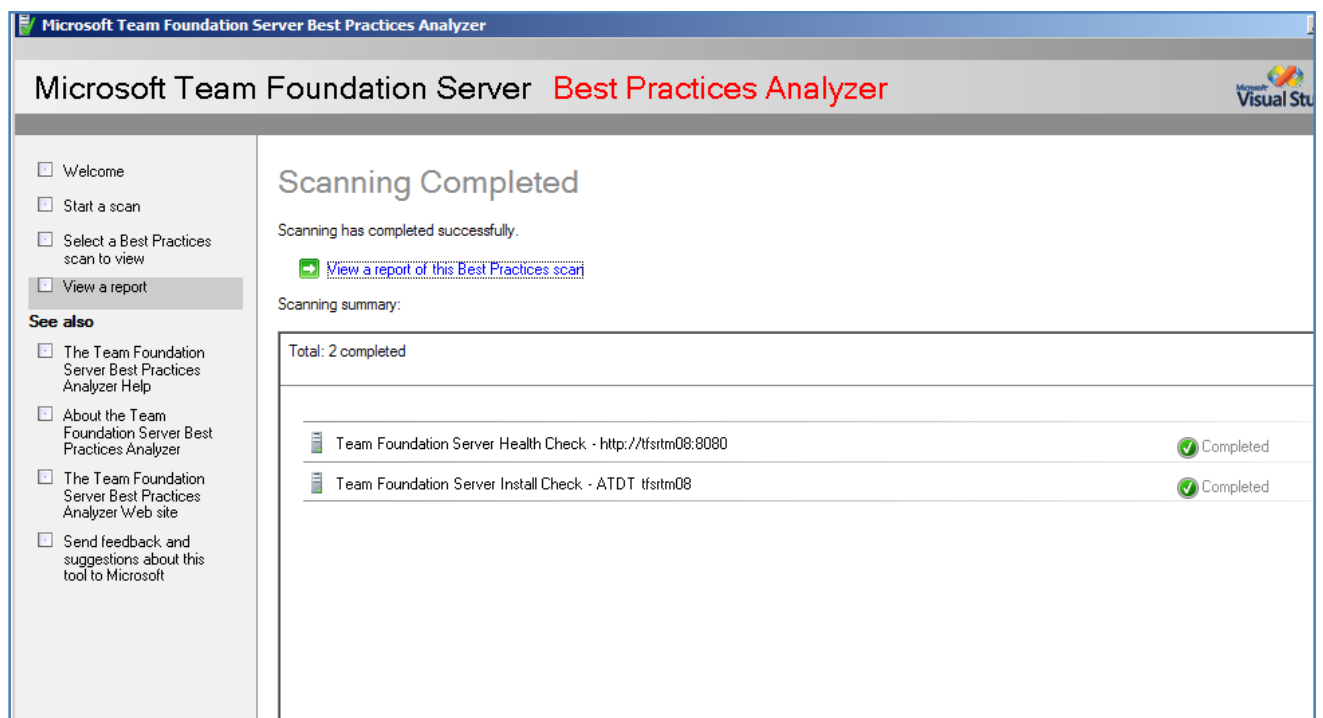
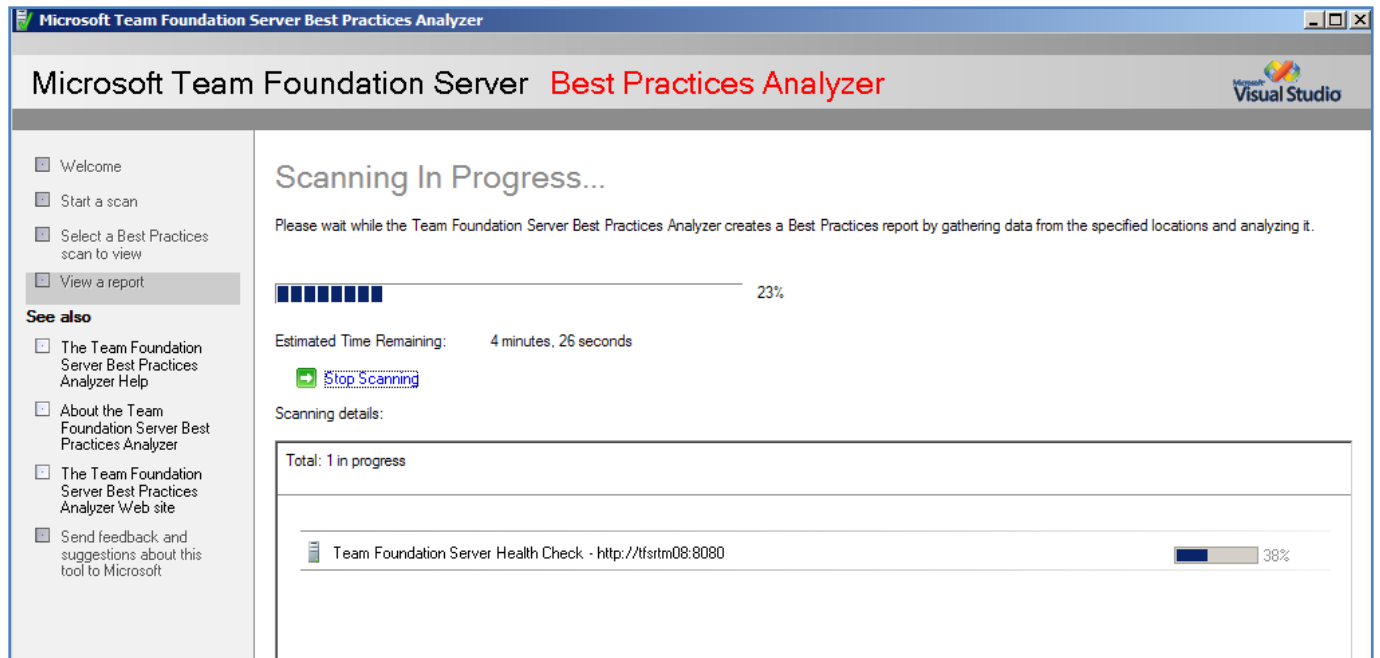
You will be redirected to a nice web-based view of your team foundation server where you have access to almost everything.



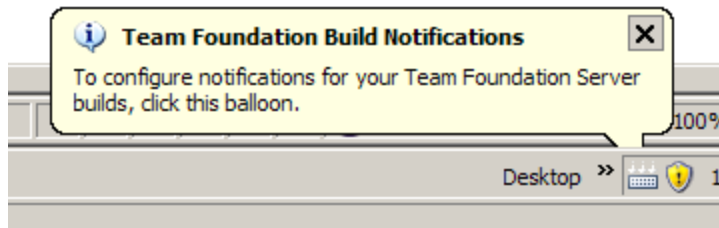


7) Install Visual Studio Team System 2008 Team Foundation Server Power Tools

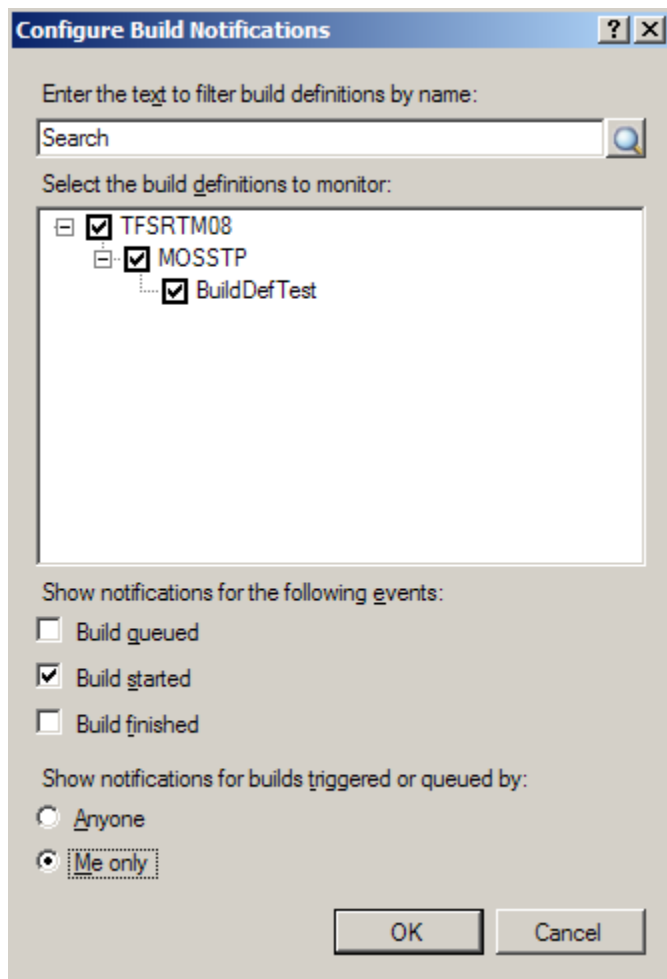
TFS Power Tools includes many cool features such as Best Practices Analyzer , Build Notification Tool ,Team Explorer IDE menu additions and etc. Next step would be to download this tool from [here](#) and install it on your TFS . You can also install this on your own client machine , but keep in mind that many of these features are admin ONLY. For more information click [here](#). Best Practices Analyzer is checking the my TFS health :



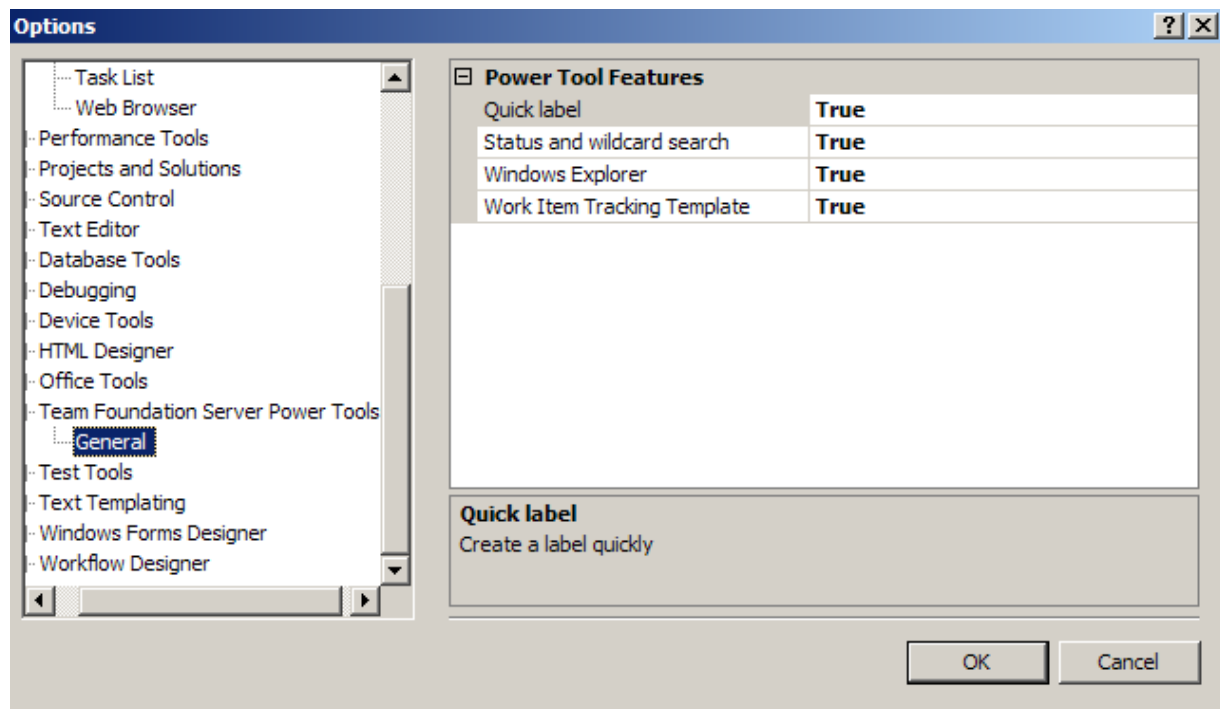
As part of this download there is a nice cool feature called TFS Build notifications.



This runs in the system tray to monitor the status of the build definitions you have specified.



And some enhancements to the Team Explorer IDE. If you go to Tools--> Options -->Team Foundation Power Tools, you will see a list of all these enhancements and you can enable or disable them.



As I said there are many more features as part of this download. Hopefully I have been able to give you a tour for TFS 2008 and how to quickly add your first TFS friendly Web Part ;) . In the following weeks, I would like to write about creating special builds for SharePoint projects in particular, so stay tuned.